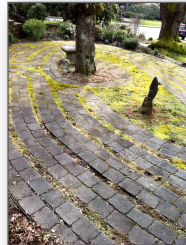




PORTLAND

A. Cedar Hills UCC Church, 11695 Southwest Park Way; labyrinth in church yard; classical, pea gravel in church garden; always open

B. Metanoia Peace Community UMC, 2116 NE 18th Ave.; labyrinth on front lawn; outdoor brick paver classical; always open



C. OHSU Center for Women's Health, OHSU Marquam Hill campus, Kohler Pavilion, 3303 Southwest Bond Avenue, 7th floor balcony; classical, brick/paver;



always open

D. Parkrose Community Peace Labyrinth, Corner of NE 115th St. & NE Shaver St.; SW corner of Parkrose High School campus; contemporary brick paver; always open



E. The Grotto, 8840 NE Skidmore St.; Chartres, brick paver; open 9 AM to 8 PM daily, \$3 elevator fee.



F. Sts. Peter and Paul Episcopal Church, 8147 SE Pine St.; classical, bark; always open



G. St. Gabriel's Episcopal Church, 17435 NW West Union Rd.; on patio behind church; painted concrete; always open



H. Labyrinth House, Paula Starr, 2801 SE 58th Ave.; the Unity Labyrinth is a mown

grass reconciliation-style labyrinth with five circuits and a central axis "chakra walk," Private/Call 503-810-4061 to check availability. Open Fridays 9 AM - Dusk, and Sundays 9 AM - Noon.



I. Garden Labyrinth, Cindy Kinnie, 12915 NW Skyline Blvd. Portland; classical seven-circuit garden labyrinth with a gazebo and beautiful views of the Tualatin Valley. Private/Call 503-645-9931 to check availability.

J. Trinity Episcopal Cathedral (pictured on brochure front), 147 NW 19th Ave.; Chartres, inlaid wood; open Mondays 11 AM to 1 PM; call 503.478.1201 for evening walks and other opportunities.

BEAVERTON

K. Mission of the Atonement, 7400 SW Scholls Ferry Rd.; 11 circuit Chartres; brick/paver, always open.



L. Garden Labyrinth, Pat Reser, 8080 SW 175th Ave.; classical; rock/garden; Private/Call 503.649.5013 to check availability.

CLACKAMAS



M. Kaiser Sunnyside Hospital, 10163 SE Sunnyside Rd.; located near the Birthing Center; brick paver Chartres style; always open

GRESHAM

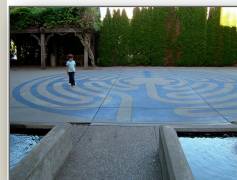
N. Saint Luke the Physician Episcopal Church, 120 SW Towle Ave.; concrete Chartres style in the church yard with gardens, always open.



TIGARD



O. St. James Episcopal Church, 11511 SW Bull Mountain Rd.; behind church with stations of the cross; paint on concrete; always open



TUALATIN

P. Legacy Meridian Park Hospital, 198300 SW 65th Ave.; 7 circuit Chartres; paint on concrete; in Seasons of Life garden; always open

PORTLAND AREA LABYRINTHS



Trinity Cathedral

WELCOME

Welcome to Portland, home to dozens of beautiful labyrinths. No matter where you are in the greater Portland area, visitors are sure to find a nearby labyrinth in a welcoming venue. From churches to hospitals to schools to private backyards, there are designs and materials that will inspire and soothe the seeking soul. Please visit labyrinthnetworknorthwest.org for updates to this brochure, or for more information about labyrinths.



Map of Portland-Area Labyrinths

"Upon the path of trust, O friends,
we need not judge ourselves or
others, For, as we reverence all life,
the beauty and unity of diversity
will be seen."

-Nan C. Merrill, Psalm 105, 'Psalms for Praying,
an Invitation to Wholeness'

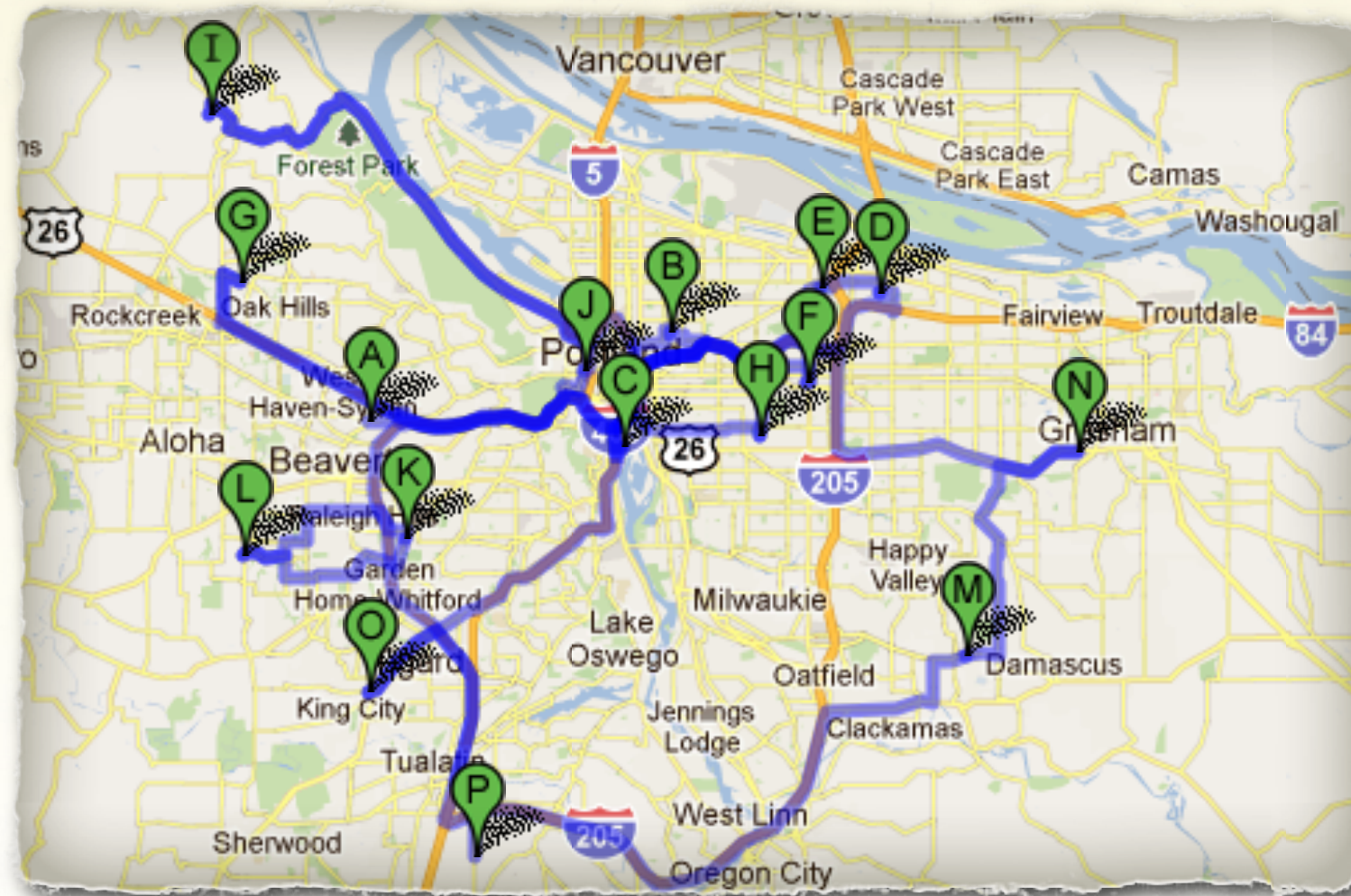
"Pilgrim?
Today?
Yes, this very day."

Perhaps not so much
To Kailish, Jerusalem,
Mecca, Santiago, Nidaros...
As on the invisible path,
In the inner landscape.

That's where
Everything begins.
And where
Everything ends.

The inner landscape is
The terrain we know.
The invisible path
Leads towards the Middle,
Where life is always new."

-Bodvar Schjelderup



"A good traveler has no
fixed plans, and is not
intent on arriving." -Lao
Tzu

Labyrinth Song
by Marlise Stroebe

Listen, what will you hear; (repeat
each line 3 times) Spirit guide me.
Seeking, what will you find;
Spirit guide me.
Loving, what will you share;
Spirit guide me.
Crying, what makes you sad;
Spirit guide me.
Laughing, what will you cure;
Spirit guide me.
Forgiving, what will you heal;
Spirit guide me.
Teaching, what will you change,
Spirit guide me.

"Furthermore, we have not
even to risk the adventure
alone, for the heroes of all
time have gone before us.
The labyrinth is thoroughly
known.... Where we had
thought to travel outward,
we will come to the center of
our own existence. And
where we had thought to
be alone, we will be with all
the world." -Joseph Campbell,
Hero With a Thousand Faces